

## Johnson and Johnson Talc



### ❖ Context

- Pharmaceutical giant Johnson and Johnson (J&J) announced that it would discontinue the sale of its talc-based baby powder globally in 2023.

### ❖ What is Talc?

- Talc is the softest known mineral and is mined from underground deposits.
- Chemically, it is **hydrous magnesium silicate**, according to the US Food & Drug Administration (FDA), and is used in a variety of **cosmetic and personal care products**, like baby powder, lipstick, eyeshadow, and foundation.
- When reduced to a fine powder, it is able to absorb moisture and reduce friction which keeps the skin dry, helps prevent rashes, stops makeup from caking, & generally helps improve the feel and texture of a product.

### ❖ Does it Cause Cancer?

- **Asbestos**, the name for another group of naturally occurring silicate minerals, can also be found near talc deposits.
- There is the potential for contamination of talc with asbestos.
- Asbestos has been used in construction and manufacturing and is **known to cause lung cancer, ovarian cancer, mesothelioma, and other health conditions**.
- According to the American Cancer Society, it is generally accepted that **talc contaminated with asbestos can cause cancer**. However, it is less clear whether asbestos-free talc is harmful as well. For decades, paediatricians have advised parents to not use talcum powder on babies, even if it does not contain asbestos.
- They warn that if they inhale talc, it can **cause choking, infection and respiratory illnesses**.

## F-INSAS, LCA



### ❖ Context

- Defence Minister recently handed over two new weapons – the Nipun mines, the Landing Craft Assault (LCA) and the F-INSAS system – to the Army.

### ❖ What is the F-INSAS system?

- F-INSAS stands for Future Infantry Soldier as a System, a programme for infantry modernisation aimed at increasing the operational capability of the soldier. As part of the project, soldiers are being equipped with modern systems that are lightweight, all-weather-all-terrain, cost-effective & low maintenance.
- It has a range of 300 metre, and is being made in Amethi in a Russia-India joint venture.
- The F-INSAS system brings in hands-free, secured advanced communications set for real-time exchange of information with the command posts and enhanced situational awareness.

### ❖ What are Nipun Mines?

- Nipun mines are indigenously designed and developed anti-personnel mines.
- They are meant to act as the first line of defence against infiltrators and enemy infantry. They are smaller in size & can be deployed in large numbers.

### ❖ What is the Landing Craft Assault (LCA)?

- The LCA is meant to be a replacement for boats with limited capabilities currently in use in the Pangong Tso lake. The LCA, which has been indigenously developed by Aquarius Ship Yard Limited, Goa, has better launch, speed and capacity to operate across the water obstacles in eastern Ladakh.

## Dornier Aircraft

### ❖ Context

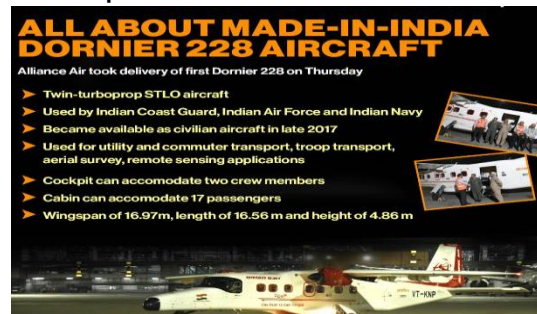
- India recently handed over a Dornier aircraft to Sri Lanka in the presence of President of Sri Lanka, reaffirming its security ties with the island nation.

### ❖ Key Highlights

- The gifting of the Dornier aircraft to the Sri Lanka Air Force is of relevance to and a step to meet its requirements for maritime safety and security.
- The Indian gift was in response to a request from the Sri Lankan government in 2018 for two Dornier Reconnaissance Aircraft to enhance the maritime surveillance capabilities of the island nation.
- Sri Lanka is a member of the “**Colombo Security Conclave**”, which began as a trilateral initiative involving **India, Sri Lanka, and the Maldives**, and later included Mauritius, for maritime cooperation in the region.

### ❖ About The Aircraft

- The 19 seater HAL - DO - 228 aircraft is a highly versatile multi-purpose light transport aircraft.
- It has been developed specifically to meet the manifold requirements of :



- utility & commuter transport,
- third level services & air-taxi operations,
- coast guard duties & maritime surveillance.

## Face to Face Centres



## Bru (Reang) Refugees



### ❖ Context

- Former chief minister of Tripura hoisted the Tricolor in one of the refugee settlements of Bru community on Independence Day.

### ❖ Key Highlights

- The flag was hoisted at **Bruha Para of Tripura's Dhalai district**, one of the resettlement villages of Bru community.
- He held the efforts made by the Union government for the resettlement of refugees in the North east in the aftermath of the Quadripartite agreement.

### ❖ Quadripartite Accord

- The Centre, the governments of Mizoram and Tripura and leaders of Bru organizations signed a quadripartite agreement in January (2020).
- Under the pact, the Home Ministry has committed to incur the whole expenditure of settlement in Tripura.
- A package was assured in the accord that each refugee family would get a plot of land, fixed deposit amounting 4 lakh rupees.
- A monthly stipend and free rations will be provided for 2 years.

### ❖ About Bru Refugees



### • Background

- Bru or Reang is a community **indigenous to Northeast India**, living mostly in Tripura, Mizoram and Assam.
- In **Tripura**, they are recognized as **PVTG**.

- **Originally from Mizoram**, they have been targeted by some extreme groups who don't consider them indigenous to the state.
- **In 1997, ethnic clashes** led to migration of Brus to parts of Tripura.
- Some have been **repatriated to Mizoram** and some are still living in Tripura in relief camps.
- In **June 2018**, Some leaders of the community signed an **agreement** with the centre and two governments of Mizoram and Tripura.
- The agreement provided for repatriation in Mizoram but **most camp residents rejected** the terms of agreement on safety grounds.

### ❖ PVTGs

- PVTGs (Particularly Vulnerable Tribal Groups) are more vulnerable among the tribal groups which are **about 8.5% of total tribal population**.
- In **1973, the Dhebar Commission** created Primitive Tribal Groups (PTGs) as a separate category, which are less developed among the tribal groups.
- In **2006**, the Government of India renamed the **PTGs as PVTGs**. There are **75 listed PVTGs in India** among them **highest are found in Odisha**.
- ❖ **Characteristics of PVTGs**
  - Government of India follows the following criteria for identification of PVTGs.
    - Pre-agricultural level of technology.
    - Low level of literacy.
    - Economic backwardness.
  - A declining or stagnant population.

## Declining Levels of Rhine River

### ❖ Context

- Water levels on the Rhine river are very low because of unusually hot and dry weather, preventing many vessels from navigating the critical European shipping route fully loaded.

### ❖ Significance of Rhine

- Flowing from the Swiss Alps to the North Sea via German industrial heartlands, the Rhine is a major route for products ranging from grains to chemicals and coal.



- It is an important link between industrial producers and global export terminals in North Sea ports such as **Rotterdam and Amsterdam**, while canals and other rivers link the Rhine to the Danube, making it possible to ship to the Black Sea as well.

### ❖ Impact of Lower Water Levels

- When water levels fall, cargo vessels have to sail with reduced load to prevent them running aground.
- Economists estimate the disruption to Rhine shipping could knock as much as **half a percentage point** off overall economic growth this year in Europe's largest economy.
- The low Rhine water levels are expected to increase costs for chemicals companies and could lead to production cuts.
- **Coal power plants** – now back in fashion as an alternative to Russian gas supplies – also face supply shortages with boats unable to take on enough coal.

## Face to Face Centres



## FIFA Suspends India

### ❖ Context

- India was recently suspended by world governing body FIFA for "undue influence from third parties" and stripped the country of the right to host the Under-17 Women's World Cup, scheduled for October 2022.



### ❖ Key Highlights

- **Third-Party Interference:** Third-party interference refers to a situation in which a member association of FIFA fails to remain independent, is co-opted, and no longer has control over its organisation.
- The suspension means, firstly, no international football - and this applies to all national teams, across all age groups.
- It also applies to both men's and women's football, and to all club teams in India.
- The suspension also impacts international transfers, as well as any courses or developmental programs that AIFF officials could, or were taking part in.

- This in effect means a total ban on all football-related activities outside India. However, the league in the country, as well as domestic transfers, can continue.
- This is the first time the All India Football Federation (AIFF) has been banned by FIFA in its 85 year history.
- ❖ **About FIFA**
- **FIFA (Fédération internationale de Football Association)** is an international governing body of association football, beach football and futsal.
- It was founded in 1904 to oversee international competition among the national associations of Belgium, Denmark, France, Germany, the Netherlands, Spain, Sweden and Switzerland.
- Headquartered in **Zürich**, Switzerland, its membership now comprises 211.

## News in Between the Lines

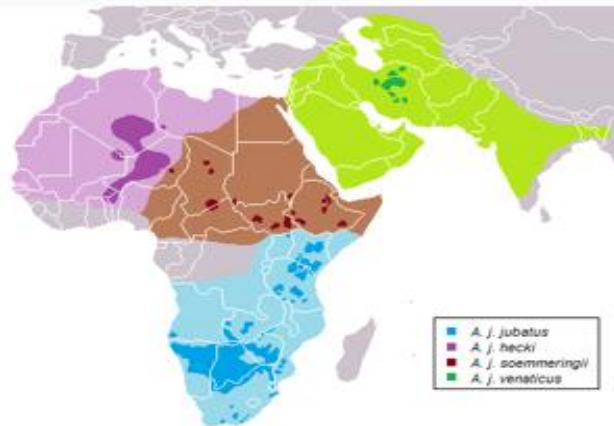
### African Cheetah



### ❖ Context

- India missed its unofficial deadline of 15th August to translocate the African cheetah to India.

### ❖ Key Highlights



(Distribution of African Cheetah In Sky Blue)

- India's action plan on re-establishing the cheetah - **extinct since 1952 in India** - states that a cohort of around **10-12 young** would be imported from Namibia or South Africa as a founder stock during the first year.
- Cheetahs' prospective destination purposed is **Kuno Palpur forest reserve**, Madhya Pradesh.
- It is being said that the **presence of leopards in Kuno Palpur forest** is causing delays in reintroduction.

### ❖ African Cheetah

- They are listed as **Vulnerable in the IUCN list** and appendix-I of the CITES.
- Their **population** in the wild is estimated to be **about 6000-7000**.
- They are found in **Continental South Eastern Africa** concentrated mainly in Namibia, Botswana, South Africa etc.
- They are **bigger in size than Asiatic Cheetah** which is already extinct in India.

### Panch Pran



### ❖ Context

- On the country's 75th Independence Day, The Prime Minister stressed on '**Panch Pran**' (five resolves) to ensure a **developed India in the next 25 years**.

### ❖ Five pledges

- A resolve of developed India;
- Removing any trace of the colonial mindset;
- Taking pride in our legacy;
- Our strength of unity; and
- Fulfilling the duties of citizens with honesty.

## Face to Face Centres



## Sudan



### ❖ Context

- Recently, heavy rains have triggered flash floods in Sudan which have wreaked havoc across Sudan leading to inundation 12 of 18 provinces of Sudan.

### ❖ Key Highlights

- According to the **UN Office for the Coordination of Humanitarian Affairs**, floods have inundated many health facilities and the western **Darfur region** and the provinces of Nile River, White Nile, West Kordofan and South Kordofan were hardest hit.

### ❖ About Sudan

- It shares its border with **Egypt and Eritrea along the Red Sea**.
- Traditionally Sudan is a dry climate country where the central & the northern part have extremely dry, desert areas such as **the Nubian Desert & Bayuda Desert**.
- Southern Sudan has **some grasslands and tropical savanna**.
- In the past few years changed climate conditions have led to frequent floods which have led authorities to impose an **emergency in 2020**.
- In the recent years there have been **Genocides in Darfur region** and **military coup** in the country putting it into headlines.

## Yuwan Wang 5



### ❖ Context

- A day after Indian Independence day, the controversial Chinese space- satellite tracker vessel Yuan Wang 5 has **arrived at Sri Lanka's Hambantota port**.

### ❖ Key Highlights

- Earlier the scheduled visit was deferred as the visit caused several tensions in the diplomatic relations of neighboring countries of Sri Lanka including India.
- India and the USA have protested citing the vessel's **"military capabilities"** while being in the Indian Ocean Region.

### ❖ About Yuwan Wang 5

- Yuan Wang 5 is the **third-generation scientific research ship** of the Yuan Wang series, owned by China.
- The ship can be used to **monitor satellite, rocket and intercontinental ballistic missile launches**.
- Several **experts have** described it as a **"dual-use spy ship"**.
- The ship will be used by **China to conduct satellite control and research tracking** in the northwestern part of the Indian Ocean Region through August and September.

## International Labour Organization (ILO)



[Daily Current Affairs](#)

[Daily MCQ Quiz](#)

[Daily Pre PARE](#)

### ❖ Context

- Recently, ILO has released a report titled **"Global Employment trends for youth 2022 : Investing in transforming futures for young people"**.

### ❖ About ILO

- It is the **first specialized agency of the UN** established in **1919** through the Paris Peace conference or **Treaty of Versailles**.
- It is headquartered in **Geneva, Switzerland**.
- It is **only "tripartite" UN agency** which includes representatives of Governments, Employers and people.
- Its Objectives are to **promote rights at work, encourage decent employment opportunities, enhance social protection etc**.
- Membership: 186 member states along with **10 permanent seats of major industrial countries** including India and China.
- It was awarded the **Nobel Peace Prize in 1969**.
- **India is a founding member of ILO** and signed **6 of 8 core conventions** of ILO excluding conventions no 87 and 98.

### ❖ Reports

- Global wage Report.
- World Social Protection Report and World Employment and Social Outlook.

## Face to Face Centres

