

Multidimensional Poverty Index (MPI)

Global Multidimensional Poverty Index 2022



Unpacking deprivation bundles to reduce multidimensional poverty

❖ Context

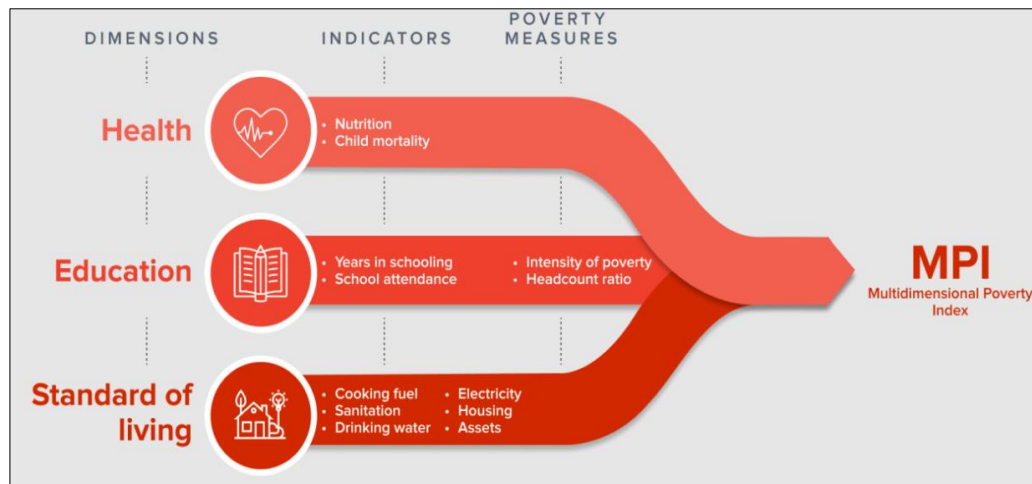
- Recently, the global **Multidimensional Poverty Index (MPI)** was released by **United Nations Development Programme (UNDP)** and the **Oxford Poverty and Human Development Initiative (OPHI)**.

❖ Key Highlights

- About **41.5 crore people exited poverty in India** during the 15-year period between 2005-06 and 2019-21.
- Two-third exited in the first 10 years, and one-third in the next five years.
- **Incidence of poverty** fell from 55.1% in 2005-06 to 16.4% in 2019-21 in the country.
- The **MPI value** fell from 0.283 in 2005-2006 to 0.122 in 2015-2016 to 0.069 in 2019-2021.
- The deprivations in all **10 MPI indicators saw significant reductions** as a result of which the MPI value and incidence of poverty more than halved.
- Improvement in MPI for India has significantly contributed to the **decline in poverty in South Asia**.
- **Bihar**, the poorest State in 2015-2016, saw the **fastest reduction in MPI value** in absolute terms.
 - The incidence of poverty there fell from 77.4% in 2005-2006 to 34.7% in 2019-2021.
- **Side Note :**
 - **India** has by far the **largest number of poor people worldwide at 22.8 crore**, followed by Nigeria at 9.6 crore.
 - There were also **9.7 crore poor children** in India in 2019-2021.

❖ Multidimension Poverty Index (MPI)

- **About :**
 - MPI is a **key international resource** that measures acute multidimensional poverty.
 - It **measures poverty** across more than **100 developing countries**.
 - It was **first launched in 2010** by the OPHI and the Human Development Report Office of the UNDP.
- **Indicator :**
 - The global MPI constructs a **deprivation profile** of each household and person through **10 indicators** spanning health, education and standard of living.
 - All indicators are **equally weighted** within each dimension.
 - The global MPI identifies people as **multidimensionally poor** if their **deprivation score is 1/3 or higher**.



World Green City Award

❖ Context

- Recently Telangana's Hyderabad city won the overall '**World Green City Award 2022**' and '**Living Green for Economic Recovery and Inclusive Growth**' award at the **International Association of Horticulture Producers (AIPH) World Green City Awards 2022** held in Jeju, South Korea.



❖ Key Highlights

- Hyderabad beat cities like Paris, Mexico City, Montreal, Fortaleza and Bogota to be adjudged the grand winner.
- It not only won the category award but the overall 'World Green City 2022' award i.e. the best across all six categories.
- Hyderabad also became the only Indian city to win laurels on the International platform.
- The category focuses on **creating systems and solutions** that allow all city residents to overcome economic distress and thrive and the ORR greenery called 'Green Necklace to the State of Telangana' was adjudged the best in this category.
- Hyderabad is the only city from India to be selected for these international awards.
- **Here's a list of other cities that won the AIPH awards in different categories:**

- **Living Green for Biodiversity :** Reverdecer Bogotá, Bogota D.C, Colombia
- **Living Green for Climate Change :** Mexico City's Environmental and Climate Change Program, Mexico City, Mexico
- **Living Green for Health and Wellbeing :** Transforming degraded land into Urban Micro Parks, City of Fortaleza, Brazil
- **Living Green for Water :** The Phytotechnology Stations at the Montréal Botanical Garden / Space for Life, City of Montreal, Canada
- **Living Green for Social Cohesion :** OASIS Schoolyard Project, City of Paris, France
- **Living Green for Economic Recovery and Inclusive Growth :** Green Garland to the State of Telangana, City of Hyderabad.

Face to Face Centres



Foreign Direct Investment

❖ **Context**

➤ According to a report by the **Confederation of Indian Industries (CII)** and EY India has the potential to attract Foreign Direct Investment (FDI) flows of \$475 billion in the next five years.



❖ **Key Highlights**

- FDI to India almost **doubled to \$83.6 billion** in 2021-22 from \$ 45.15 billion in 2014-2015.
- **Top Five Source Nations :**
 - Singapore (27.01%), USA (17.94%), Mauritius (15.98%), Netherland (7.86%) and Switzerland (7.31%) emerge as top 5 countries for FDI equity inflows into India FY 2021-22.
- **Top 5 sectors receiving highest FDI Equity Inflow during FY 2021-22 are :**
 - Computer Software & Hardware (24.60%), Services Sector (12.13%), Automobile Industry (11.89%), Trading 7.72% and Construction (Infrastructure) Activities (5.52%).
- **Top 5 States receiving highest FDI Equity Inflow during FY 2021-22 are :**
 - Karnataka (37.55%), Maharashtra (26.26%), Delhi (13.93%), Tamil Nadu (5.10%) & Haryana (4.76%)
- As per the **UNCTAD World Investment Report (WIR) 2022**, in its analysis of the global trends in FDI inflows, India has improved one position to **7th rank among the top 20 host economies for 2021**.

❖ **Foreign Direct Investment (FDI)**

- **About :**
 - Foreign direct investment (FDI) is when a **company takes controlling ownership** in a business entity in another country.
 - With FDI, foreign companies are **directly involved with day-to-day operations** in the other country.
 - This means they aren't just **bringing** money with them, but also **knowledge, skills and technology**.

• **Routes through which India gets FDI :**

- **Automatic Route :**
 - The non-resident or Indian company does not require prior nod of the RBI or government of India for FDI.
- **Govt Route :**
 - The government's approval is mandatory.
 - The company will have to file an application.
 - The application is then forwarded to the respective ministry, which will approve/reject the application.
 - **DPIIT** will issue the Standard Operating Procedure (SOP) for processing of applications under the existing FDI policy.
- **Industries where FDI is strictly prohibited :**
 - Atomic Energy Generation, Any Gambling or Betting businesses Lotteries (online, private, government, etc), Investment in Chit Funds Nidhi Company, Agricultural or Plantation Activities, Cigars, Cigarette.



Durgavati Tiger Reserve

❖ **Context**

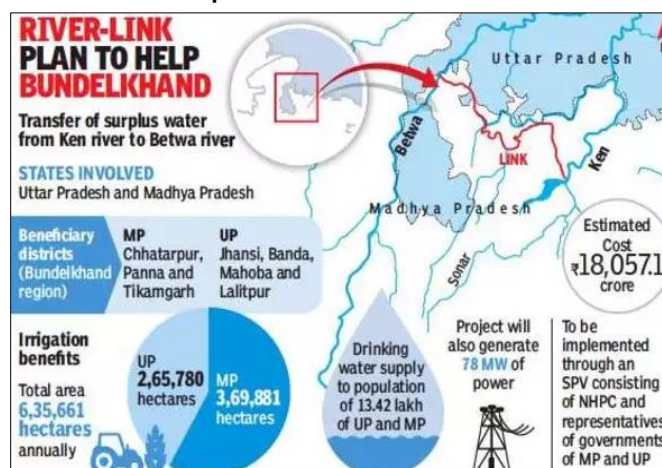
➤ **Madhya Pradesh Wildlife Board** recently approved a new reserve for tigers of **Panna Tiger Reserve (PTR)**, one-fourth of which will get submerged due to the **linking of the Ken-Betwa rivers**.



❖ **Key Highlights**

- The 2,339 square kilometres new tiger reserve, to be called **Durgavati Tiger Reserve**, will spread across Narisinghpur, Damoh and Sagar districts.
- A green corridor linking PTR with Durgavati will be developed for the natural movement of the tiger to the new reserve.
- **About Ken-Betwa link Project**
- The Ken-Betwa link project (KBLP) is the first river interlinking project, planned under the Peninsular Rivers Development of the **National Perspective Plan (NPP)**.

- The region spread across the districts of two states mainly Jhansi, Banda, Lalitpur and Mahoba districts of UP and Tikamgarh, Panna & Chhatarpur districts of MP.



- It will connect the tributaries of the Yamuna River, namely the **Ken river** in the Panna district of Madhya Pradesh and the **Betwa river** in Uttar Pradesh.
- The project involves building a 77-metre tall and a 2-km wide Dhaudhan dam and a 230-km canal.

Face to Face Centres



News in Between the Lines

PM Kisan Samman Sammelan 2022



❖ Context

- Prime Minister inaugurated the grand PM Kisan Samman Sammelan 2022 recently at the Indian Agricultural Research Institute in New Delhi.

❖ Key Highlights

- PMKSK will cater to a wide variety of farmer needs and provide agri-inputs
 - like fertilizers, seeds, implements; testing facilities for soil, seeds, fertilisers;
 - generate awareness among farmers;
 - provide information regarding various government schemes and ensure regular capacity building of retailers at block/ district level outlets.
- The PM also inaugurated the Agri Startup Conclave and Exhibition in which about 300 startups will showcase their innovation in farming techniques.



- **Indian Edge:** An e-magazine called 'Indian Edge' with a focus on fertilisers was launched during the event.
- It will provide information on domestic and international fertiliser scenarios, including recent developments, price trends analysis, availability and consumption, and success stories of farmers, among others.

Pradhan Mantri Kisan Samruddhi Kendras (PMKSK)



❖ Context

- Recently, Prime Minister of India inaugurated 600 Pradhan Mantri Kisan Samruddhi Kendras (PMKSK) under the ministry of chemicals and fertilizers.

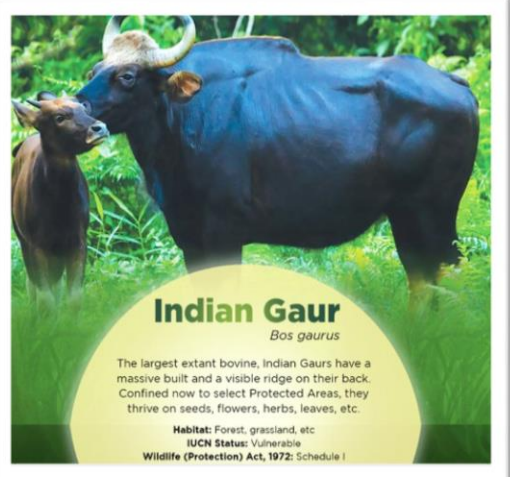
❖ Key Highlights

- Under the scheme, the **retail fertilizer shops in the country will be converted into PMKSK** in a phased manner.



- PMKSK will cater to a wide variety of needs of the farmers and provide agri-inputs (fertilisers, seeds, implements), testing facilities for soil, seeds, & fertilizers.
- It will **generate awareness** among farmers.
- It will **provide information** regarding various government schemes and ensure regular capacity building of retailers at block/district level outlets.
- More than **3.3 lakh retail fertilizer shops** are planned to be converted into PMKSK.

Indian Bisons



❖ Context

- The Indian government is considering a proposal from Colombo to **export a number of gaurs, or Indian bisons, to Sri Lanka.**

❖ Key Highlights

- **Objective:**
 - To **revive the population of gavaras** that have been extinct in the island since the end of the 17th century.
 - It would be the first such agreement between India and Sri Lanka, and part of a global trend of **"wildlife or zoological diplomacy"**.

❖ About Indian Bisons

- The Indian gaur, a reclusive beast that lives in the wild, is the **largest wild bovine.**
- It is extirpated from Sri Lanka and most likely Bangladesh.
- **Distribution :**
 - It is **native to South Asia and Southeast Asia.**
 - Vietnam, Cambodia, Laos, Thailand, Peninsular Malaysia, Myanmar, India, Bangladesh, Bhutan, China and Nepal.

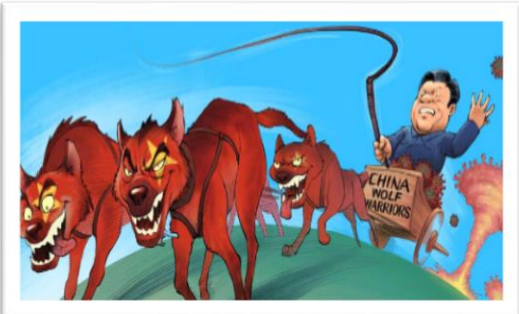
Face to Face Centres





- **Population :**
 - There are about **13,000 to 30,000 gaurs** in the world with approximately **85% of the population present in India.**
- **Conservation Status :**
 - **Wild Life Protection Act, 1972- Schedule I**
 - **IUCN Red List - Vulnerable.**

Wolf Warrior Diplomacy



❖ Context

➤ Recently, The “**wolf warrior**” style of **Chinese diplomacy** particularly attracted attention.

❖ Key Highlights

- It is a term that **gained popularity, especially after Xi became President.**
- “Wolf warrior diplomacy” is a **tactic for the Chinese government to extend its ideology beyond China and counter the West and defend itself.**
- It is an **unofficial term for the more aggressive and confrontational style** of communication that Chinese diplomats have taken to in the last decade.
- A 2015 Chinese action film, titled ‘**Wolf Warrior**’, and its sequel have served as the inspiration for the term.

Integrated Pensioners’ Portal



❖ Context

➤ Union Minister will launch Integrated Pensioners’ Portal - a single window to address the needs of pensioners.

❖ Key Highlights

- With a view to enhance ease of living of pensioners, the department has developed an Integrated Pensioners’ Portal using the **Bhavishya Portal** as the base portal.
- This incorporates various stand-alone Portals of **DoPPW viz. BHAVISHYA, CPENGRAMS, ANUBHAV, SANKALP, ANUDAAN** and banks’ portals so as to provide multiple services from a single window.
- **The State Bank of India** has become the first pension disbursing bank which has integrated its portal with the portal of **Department of Pension and Pensioners’ Welfare (DoPPW).**
- Pensioners can access this portal for all their pension-related activities.
- **Integrated Pensioners’ Portal will be integrated with all pension disbursing banks.**
- The portal also provides an opportunity to convey information related to pensioner’s contribution in enhancing the effectiveness of the various government policies.

First Indigenously Manufactured Aluminium Freight Train



❖ Context

➤ Lighter than its predecessors, but with more freight carrying capacity, the railways first indigenously **manufactured aluminium goods train rake** was flagged off from Bhubaneswar recently.

❖ Key Highlights

- The lifetime carbon saving is eight to 10 tonnes and this means, savings of more than 14,500 tonnes of carbon for a single rake.
- It can carry 180 tonnes extra payload per trip over conventional rakes and being corrosion resistant, will reduce maintenance costs.
- Fully lock bolted construction was used to built these wagons with no welding on the superstructure.
- The new rakes have a **80 per cent resale value** and a **10 year longer lifespan** as compared to normal ones.
- **Good for the domestic aluminum industry:** The iron and steel industry consumes a lot of nickel and cadmium which are imported. So proliferation of aluminum wagons will result in less import and at the same time, this is good for the domestic aluminum industry.
- **Higher cost:** The manufacturing cost is **35 per cent** higher as the superstructure is all aluminium.

[Daily Current Affairs](#)

[Daily Pre PARE](#) [Daily MCQ Quiz](#)

Face to Face Centres

DELHI MUKHERJEE NAGAR: 9205274741, 42 | **LAXMI NAGAR :** 9205212500, 9205962002 | **RAJENDRA NAGAR:** 9205274743 | **UTTAR PRADESH PRAYAGRAJ:** 0532-2260189, 8853467068 | **LUCKNOW (ALIGANJ):** 0522-4025825, 9506256789 | **LUCKNOW (GOMTI NAGAR):** 7234000501, 7234000502 | **GREATER NOIDA:** 9205336037, 38 | **KANPUR:** 7887003962, 7897003962 | **GORAKHPUR :** 7080847474, 9161947474 | **ODISHA BHUBANESWAR:** 9818244644/7656949029

